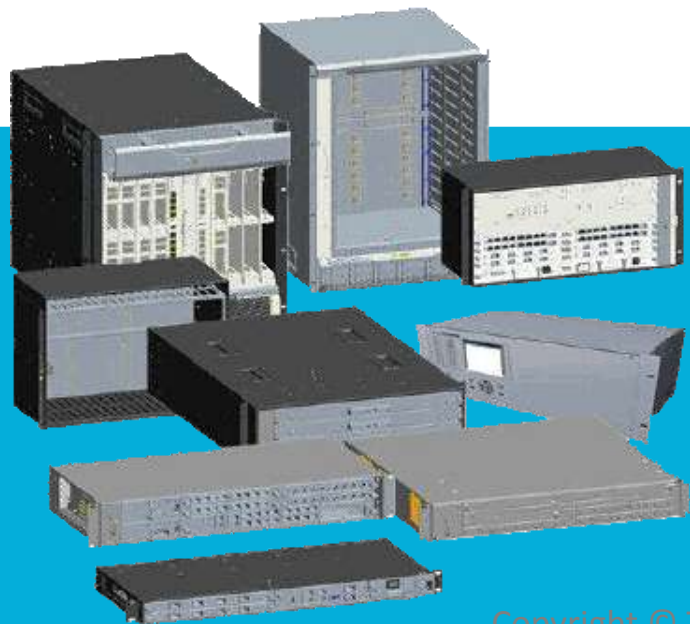


SHANGHAI TUTE TECHNOLOGY CO., LTD.



<<Outdoor Cabinet>>



SHANGHAI TUTE TECHNOLOGY CO., LTD. With the idea of creating values to customers, is committed to providing all kinds of structure design and integrated supply solutions, product line covers outdoor cabinet, indoor cabinet, plug box, terminal etc. We are professional in structure, technology, shape, thermal, mechanical, protection, engineering, EMC and so on, and could meet demands with high-quality products to customers in the area of electrical, electronic, communication industry etc.



1

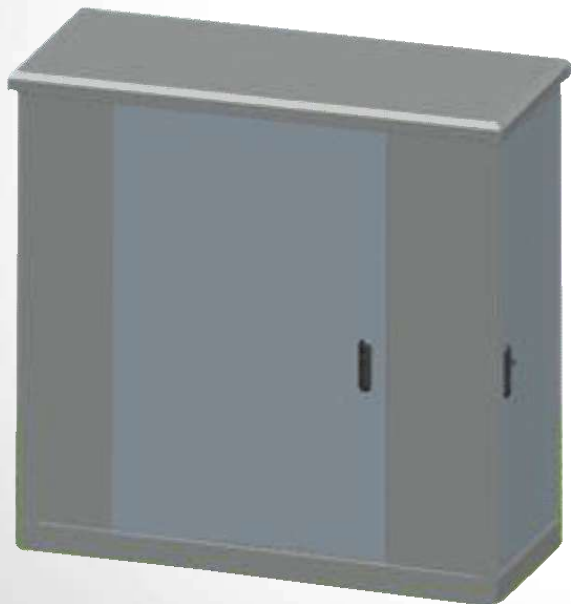
Multi-Cabinet

Multi-Cabinet



PATTERN	•THREE CABINS
DOOR	•FRONT/BACK/LEFT/RIGHT
DIMENSION	•CHANGEABLE
RADIATING	•AIR-CONDITION,HEATER EXCHANGER,WIND,NATURAL COOLING
MATERIAL	•STAINLESS/COMMON STEEL/ALUMINIUM
PROTECTION	•IP55
MECHANICAL STRENGTH	•GB/T19183.5 MEDIUM 2
WITHSTAND WIND	•40m/s
EMC	•GB/T18663.3 MEDIUM I
OPERATING TEMPERATURE	•-40°C~+55°C
OPERATING HUMIDITY	•5%~100%

Multi-Cabinet



PATTERN	•THREE CABINS
DOOR	•FRONT/BACK/LEFT/RIGHT
DIMENSION	•CHANGEABLE
RADIATING	•AIR-CONDITION,HEATER EXCHANGER,WIND,NATURAL COOLING
MATERIAL	•STAINLESS/COMMON STEEL/ALUMINIUM
PROTECTION	•IP55
MECHANICAL STRENGTH	•GB/T19183.5 MEDIUM 2
WITHSTAND WIND	•40m/s
EMC	•GB/T18663.3 MEDIUM I
OPERATING TEMPERATURE	•-40°C~+55°C
OPERATING HUMIDITY	•5%~100%

Multi-Cabinet



PATTERN	• LEFT UP AND DOWN CABINS/ RIGHT SINGLE CANIN
DOOR	• FRONT/BACK/LEFT/RIGHT
DIMENSION	• CHANGEABLE
RADIATING	• AIR-CONDITION, HEATER EXCHANGER, WIND, NATURAL COOLING
MATERIAL	• STAINLESS/COMMON STEEL/ALUMINIUM
PROTECTION	• IP55
MECHANICAL STRENGTH	• GB/T19183.5 MEDIUM 2
WITHSTAND WIND	• 40m/s
EMC	• GB/T18663.3 MEDIUM I
OPERATING TEMPERATURE	• -40°C~+55°C
OPERATING HUMIDITY	• 5%~100%



1

Multi-Cabinet

2

Double-Cabinet



Double-Cabinet



PATTERN	• COORDINATE DOUBLE CABINS
DOOR	• FRONT/BACK/LEFT/RIGHT
DIMENSION	• CHANGEABLE
RADIATING	• AIR-CONDITION, HEATER EXCHANGER, WIND, NATURAL COOLING
MATERIAL	• STAINLESS/COMMON STEEL/ALUMINIUM
PROTECTION	• IP55
MECHANICAL STRENGTH	• GB/T19183.5 MEDIUM 2
WITHSTAND WIND	• 40m/s
EMC	• GB/T18663.3 MEDIUM I
OPERATING TEMPERATURE	• -40°C~+55°C
OPERATING HUMIDITY	• 5%~100%

Double-Cabinet



PATTERN	•OVERLAP DOUBLE CABINS
DOOR	•FRONT/BACK/LEFT/RIGHT
DIMENSION	•CHANGEABLE
RADIATING	•AIR-CONDITION,HEATER EXCHANGER,WIND,NATURAL COOLING
MATERIAL	•STAINLESS/COMMON STEEL/ALUMINIUM
PROTECTION	•IP55
MECHANICAL STRENGTH	•GB/T19183.5 MEDIUM 2
WITHSTAND WIND	•40m/s
EMC	•GB/T18663.3 MEDIUM I
OPERATING TEMPERATURE	•-40℃~+55℃
OPERATING HUMIDITY	•5%~100%



1

Multi-Cabinet

2

Double-Cabinet

3

Single-Cabinet

Single-Cabinet



PATTERN	• SINGLE CABIN
DOOR	• FRONT/BACK
DIMENSION	• CHANGEABLE
RADIATING	• AIR-CONDITION, HEATER EXCHANGER
MATERIAL	• STAINLESS/COMMON STEEL/ALUMINIUM
PROTECTION	• IP55
MECHANICAL STRENGTH	• GB/T19183.5 MEDIUM 2
WITHSTAND WIND	• 40m/s
EMC	• GB/T18663.3 MEDIUM I
OPERATING TEMPERATURE	• -40°C~+55°C
OPERATING HUMIDITY	• 5%~100%

Single-Cabinet



PATTERN	• SINGLE CABIN
DOOR	• FRONT/BACK
DIMENSION	• CHANGEABLE
RADIATING	• WIND, NATURAL COOLING
MATERIAL	• STAINLESS/COMMON STEEL/ALUMINIUM
PROTECTION	• IP55
MECHANICAL STRENGTH	• GB/T19183.5 MEDIUM 2
WITHSTAND WIND	• 40m/s
EMC	• GB/T18663.3 MEDIUM I
OPERATING TEMPERATURE	• -40°C~+55°C
OPERATING HUMIDITY	• 5%~100%

Single-Cabinet



PATTERN	•SINGLE CABIN (SECTION STEEL)
DOOR	•FRONT/BACK
DIMENSION	•CHANGEABLE
RADIATING	•AIR-CONDITION,HEATER EXCHANGER,WIND,NATURAL COOLING
MATERIAL	•STAINLESS/COMMON STEEL/ALUMINIUM
PROTECTION	•IP55
MECHANICAL STRENGTH	•GB/T19183.5 MEDIUM 2
WITHSTAND WIND	•40m/s
EMC	•GB/T18663.3 MEDIUM I
OPERATING TEMPERATURE	•-40℃~+55℃
OPERATING HUMIDITY	•5%~100%

Single-Cabinet



PATTERN	•SINGLE CABIN
DOOR	•FRONT/BACK
DIMENSION	•CHANGEABLE
RADIATING	•AIR-CONDITION,HEATER EXCHANGER,WIND,NATURAL COOLING
MATERIAL	•STAINLESS/COMMON STEEL/ALUMINIUM
PROTECTION	•IP55
MECHANICAL STRENGTH	•GB/T19183.5 MEDIUM 2
WITHSTAND WIND	•40m/s
EMC	•GB/T18663.3 MEDIUM I
OPERATING TEMPERATURE	•-40℃~+55℃
OPERATING HUMIDITY	•5%~100%

Single-Cabinet



PATTERN	• SINGLE CABIN
DOOR	• FRONT/BACK
DIMENSION	• CHANGEABLE
RADIATING	• AIR-CONDITION, HEATER EXCHANGER
MATERIAL	• STAINLESS/COMMON STEEL/ALUMINIUM
PROTECTION	• IP55
MECHANICAL STRENGTH	• GB/T19183.5 MEDIUM 2
WITHSTAND WIND	• 40m/s
EMC	• GB/T18663.3 MEDIUM I
OPERATING TEMPERATURE	• -40°C~+55°C
OPERATING HUMIDITY	• 5%~100%

Single-Cabinet



PATTERN	• SINGLE CABIN
DOOR	• FRONT
DIMENSION	• CHANGEABLE
RADIATING	• WIND,NATURAL COOLING
MATERIAL	• STAINLESS/COMMON STEEL/ALUMINIUM
PROTECTION	• IP55
MECHANICAL STRENGTH	• GB/T19183.5 MEDIUM 2
WITHSTAND WIND	• 40m/s
EMC	• GB/T18663.3 MEDIUM I
OPERATING TEMPERATURE	• -40℃~+55℃
OPERATING HUMIDITY	• 5%~100%

Single-Cabinet



PATTERN	• SINGLE CABIN
DOOR	• FRONT
DIMENSION	• CHANGEABLE
RADIATING	• HEATER EXCHANGER (SIDE)
MATERIAL	• STAINLESS/COMMON STEEL/ALUMINIUM
PROTECTION	• IP55
MECHANICAL STRENGTH	• GB/T19183.5 MEDIUM 2
WITHSTAND WIND	• 40m/s
EMC	• GB/T18663.3 MEDIUM I
OPERATING TEMPERATURE	• -40°C~+55°C
OPERATING HUMIDITY	• 5%~100%

Single-Cabinet



PATTERN	• SINGLE CABIN
DOOR	• FRONT
DIMENSION	• CHANGEABLE
RADIATING	• WIND, NATURAL COOLING
MATERIAL	• STAINLESS/COMMON STEEL/ALUMINIUM
PROTECTION	• IP55
MECHANICAL STRENGTH	• GB/T19183.5 MEDIUM 2
WITHSTAND WIND	• 40m/s
EMC	• GB/T18663.3 MEDIUM I
OPERATING TEMPERATURE	• -40°C~+55°C
OPERATING HUMIDITY	• 5%~100%

Single-Cabinet



PATTERN	• SINGLE CABIN
DOOR	• FRONT/SIDE
DIMENSION	• CHANGEABLE
RADIATING	• AIR-CONDITION, HEATER EXCHANGER
MATERIAL	• STAINLESS/COMMON STEEL/ALUMINIUM
PROTECTION	• IP55
MECHANICAL STRENGTH	• GB/T19183.5 MEDIUM 2
WITHSTAND WIND	• 40m/s
EMC	• GB/T18663.3 MEDIUM I
OPERATING TEMPERATURE	• -40°C~+55°C
OPERATING HUMIDITY	• 5%~100%

Single-Cabinet



PATTERN	• SINGLE CABIN
DOOR	• FRONT/SIDE
DIMENSION	• CHANGEABLE
RADIATING	• WIND,NATURAL COOLING
MATERIAL	• STAINLESS/COMMON STEEL/ALUMINIUM
PROTECTION	• IP55
MECHANICAL STRENGTH	• GB/T19183.5 MEDIUM 2
WITHSTAND WIND	• 40m/s
EMC	• GB/T18663.3 MEDIUM I
OPERATING TEMPERATURE	• -40℃~+55℃
OPERATING HUMIDITY	• 5%~100%

Single-Cabinet



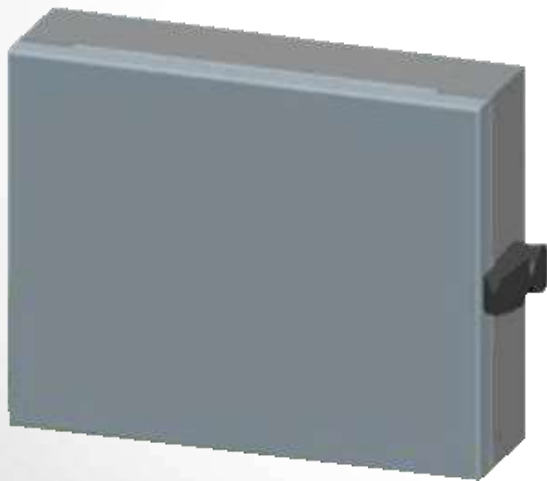
PATTERN	• SINGLE CABIN
DOOR	• FRONT
DIMENSION	• CHANGEABLE
RADIATING	• WIND, NATURAL COOING
MATERIAL	• STAINLESS/COMMON STEEL/ALUMINIUM
PROTECTION	• IP55
MECHANICAL STRENGTH	• GB/T19183.5 MEDIUM 2
WITHSTAND WIND	• 40m/s
EMC	• GB/T18663.3 MEDIUM I
OPERATING TEMPERATURE	• -40℃~+55℃
OPERATING HUMIDITY	• 5%~100%

Single-Cabinet



PATTERN	• SINGLE CABIN
DOOR	• FRONT
DIMENSION	• CHANGEABLE
RADIATING	• NATURAL COOLING
MATERIAL	• STAINLESS/COMMON STEEL/ALUMINIUM
PROTECTION	• IP55
MECHANICAL STRENGTH	• GB/T19183.5MEDIUM 2
WITHSTAND WIND	• 40m/s
EMC	• GB/T18663.3MEDIUM I
OPERATING TEMPERATURE	• -40°C~+55°C
OPERATING HUMIDITY	• 5%~100%

Single-Cabinet



PATTERN	• SINGLE CABIN
DOOR	• FRONT
DIMENSION	• CHANGEABLE
RADIATING	• NATURAL COOLING
MATERIAL	• STAINLESS/COMMON STEEL/ALUMINIUM
PROTECTION	• IP55
MECHANICAL STRENGTH	• GB/T19183.5MEDIUM 2
WITHSTAND WIND	• 40m/s
EMC	• GB/T18663.3MEDIUM I
OPERATING TEMPERATURE	• -40℃~+55℃
OPERATING HUMIDITY	• 5%~100%

SHANGHAI TUTE TECHNOLOGY CO., LTD.

- ADDRESS: TOMSON INTERNATIONAL TRADE BUILDING, No.1 JILONG ROAD, 4TH FLOOR, WAIGAOQIAO FREE TRADE ZONE, SHANGHAI
- POSTCODE: 200131
- TEL: +86-21-58690003
- FAX: +86-21-58692793
- E-mail: info@hytsu.com

Give you a leading promise and win together in the future!

THANKS!

